

Unity APIs

Streamline Data Integrations and Empower Informed Decision-Making

In today's fast-paced business landscape, organisations face significant challenges when it comes to exporting data manually.

This process is not only time-consuming but also prone to errors, potentially impacting critical business decisions.

Recognising the universal need for efficient and reliable insights, we present Unity APIs, a suite of tools that streamline the way our customers access insights and make informed choices. Unity APIs empower businesses with real-world, nearly realtime, and decision-grade insights.

By leveraging these tools, organisations gain invaluable visibility into their people, maintenance operations, and performance metrics.

With seamless data integration and comprehensive reporting capabilities, Unity APIs save valuable time and ensure the accuracy of vital information. As a result, businesses can make informed decisions promptly, improving efficiency and driving growth.



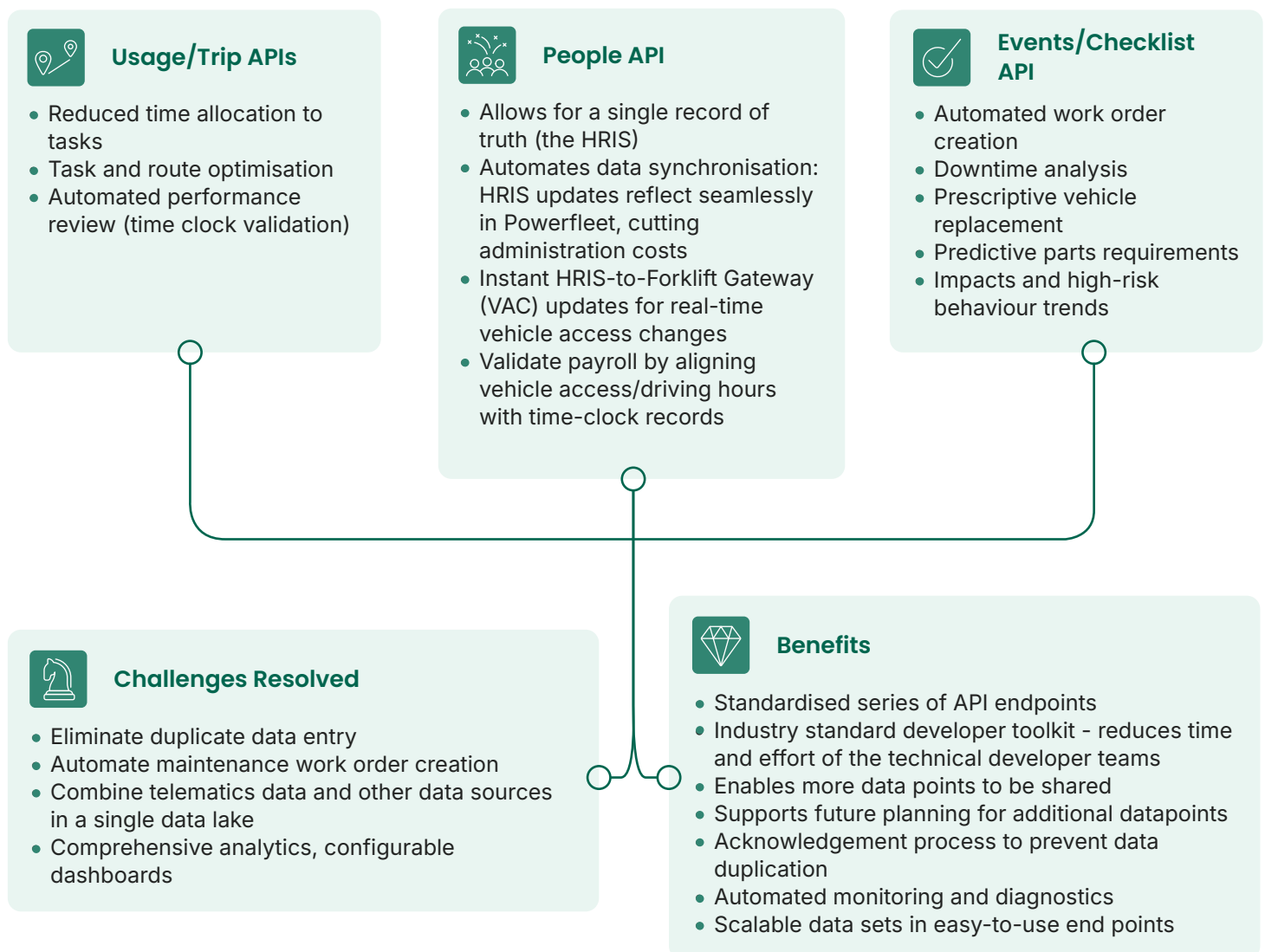
Solution at a Glance

Unity APIs (Application Programme Interfaces) were developed to assist our customers and partners in creating seamless integrations with our solutions, enabling them to generate comprehensive and insightful KPI dashboards. These APIs encompass a set of data exchange endpoints, providing customers with a standardised, repeatable, and dependable process for transmitting to, and receiving data from Powerfleet.

These exchanges are commonly employed to facilitate administrative tasks for customers who utilise other solutions applications, or to combine Powerfleet data with other business application information in their own analytics platforms.

The APIs are designed following REST (Representational State Transfer) principles with JSONencoded responses and utilise OAuth2 authentication for secure and authorised access.

With Unity APIs, you have the freedom to choose precisely what you need from the offerings that best align with your requirements. Whether you're seeking specific data points, real-time updates, or historical records, our APIs enable tailored integration to meet your unique demands.



Unlock the Power of KPI Widgets: Transform Your Decision-Making Process

Harness the power of data-driven decision-making with our powerful APIs, empowering you to create custom widgets with limitless possibilities that build insightful dashboards for data-driven choices in your operations. Visualise and analyse key metrics to ensure you're optimising performance and identify areas for improvement.

Seamlessly integrated with all your existing systems



Our APIs connect your planned activities and goals to the actual happenings



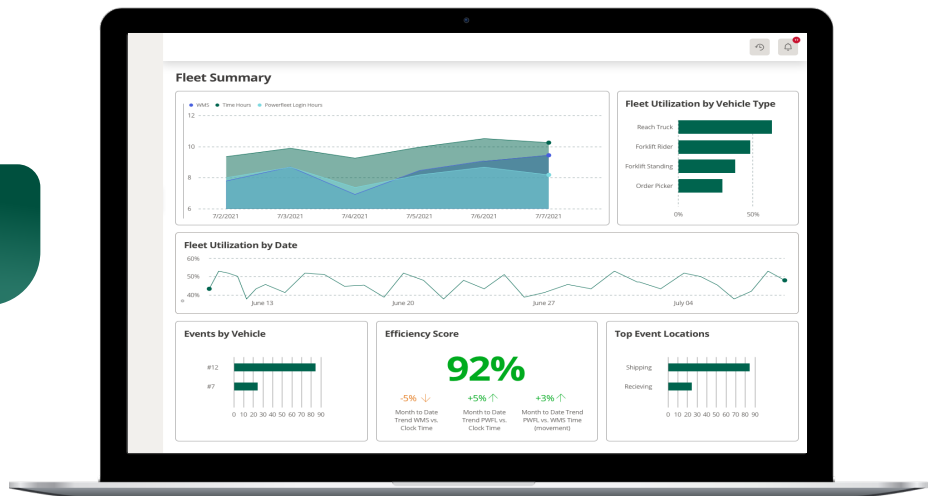
A comprehensive view of your business like never before



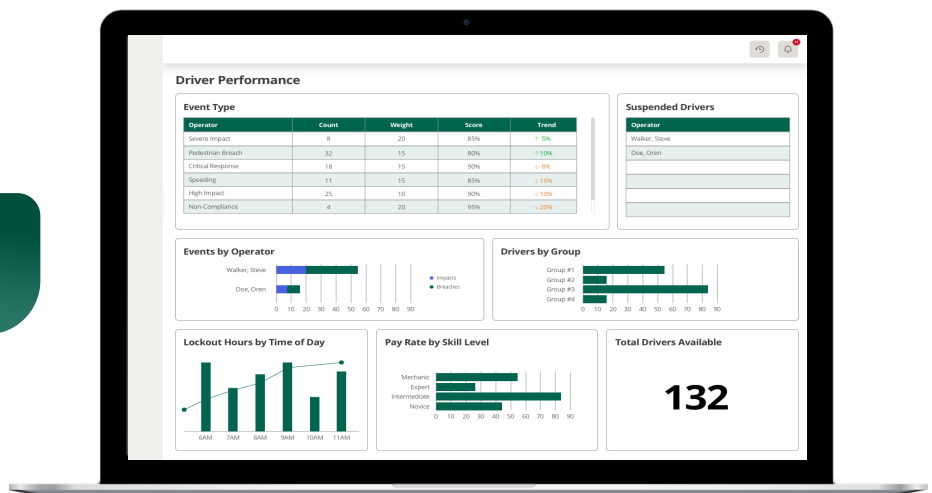
Unlock the potential of these example widgets and gain the competitive edge you need to succeed.

Real-world Usage Examples: Illustrating How Customers Have Benefited from Unity APIs

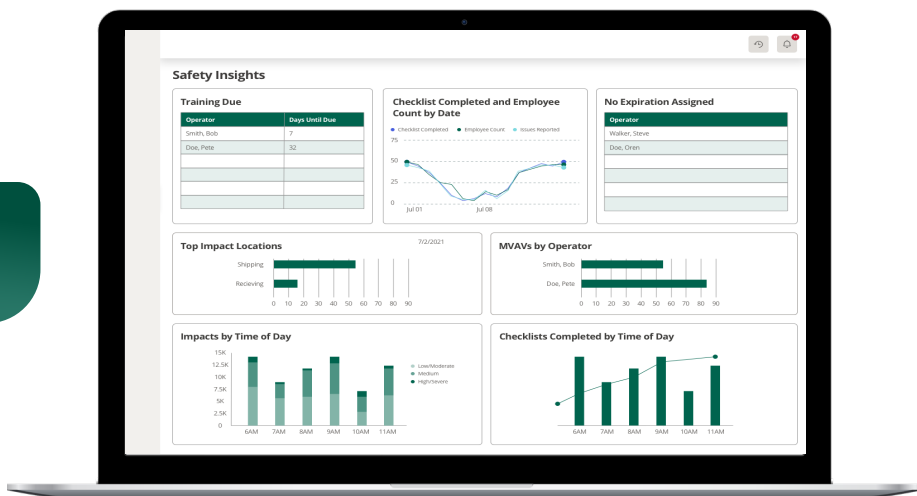
Fleet Summary



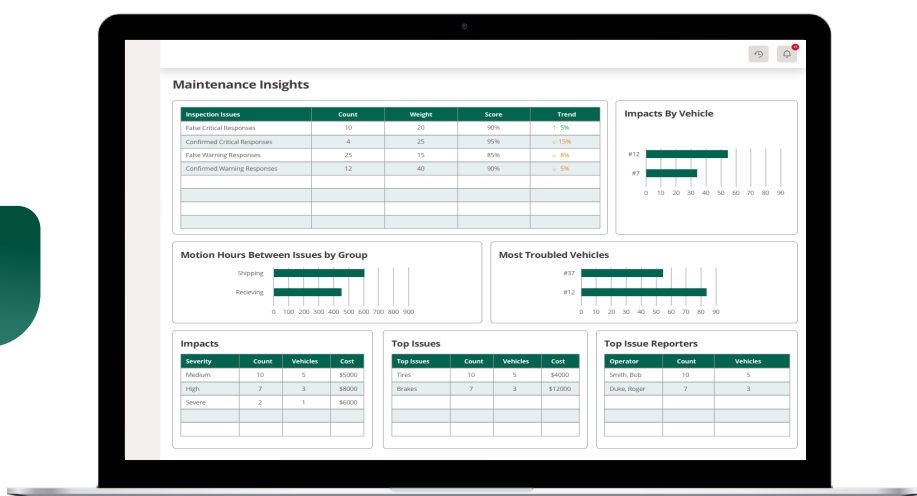
Driver Performance



Safety Insights



Maintenance Insights



Powerfleet (Nasdaq: PWFL; JSE: PWR; TASE: PWFL) is a global leader in the artificial intelligence of things (AIoT) software-as-a-service (SaaS) mobile asset industry. With more than 30 years of experience, Powerfleet unifies business operations through the ingestion, harmonisation, and integration of data, irrespective of source, and delivers actionable insights to help companies save lives, time, and money. Powerfleet's ethos transcends our data ecosystem and commitment to innovation; our people-centric approach empowers our customers to realise impactful and sustained business improvement. The company is headquartered in New Jersey, United States, with offices around the globe. Explore more at www.powerfleet.com.