

Powerfleet unity

● Unify Every Asset, Vehicle, and Person in a Single Pane of Glass

Are you struggling with disconnected fleet data, visibility gaps, and rising costs? You're not alone. Many organisations rely on multiple disconnected systems that don't integrate effectively, creating data silos with little to no cross-visibility. This fragmentation leads to inefficiencies and risk. Without a unified approach, managing high-value assets becomes a costly challenge.

Powerfleet's Unity provides the answer. Designed to simplify and unify operations, Unity is an AIoT ecosystem that connects all critical assets, people, and processes. By leveraging AI-driven intelligence, it eliminates operational blind spots, enhances efficiency, and ensures businesses stay compliant, sustainable, and competitive. This ensures real-time operational intelligence across the entire supply chain—spanning warehouses, logistics hubs, in-vehicle assets, and private fleets—for true end-to-end visibility.

Solution at a Glance

Powerfleet's Unity is a SaaS-based, hardware-agnostic AIoT platform that ingests data from almost any IoT device, OEM, or external data source.

It leverages artificial intelligence and machine learning to harmonise and simplify these diverse datasets, transforming fragmented operations into a single, unified system, providing a single pane of glass for complete operational visibility.

Engineered to tackle today's challenges in safety, compliance, operations, and sustainability, Unity provides real-time intelligence for smarter decision-making, risk reduction, and optimised asset performance.

Unity's data-powered applications are built to solve key industry challenges, ensuring businesses gain maximum value from their data:



Safety

Improve driver and operator safety through AI-powered risk monitoring and real-time alerts, reducing collisions and enhancing workplace protection.



Compliance

Ensure regulatory adherence by automating compliance tracking and reporting, minimising violations and risks.



Operations

Gain complete operational visibility, optimise asset utilisation, and ensure maximum availability with predictive insights.

Visibility

Monitor and manage all assets and workforce data in real-time.

Utilisation

Prevent inefficiencies by ensuring assets are properly deployed and managed.

Availability

Reduce downtime with proactive maintenance and resource planning.

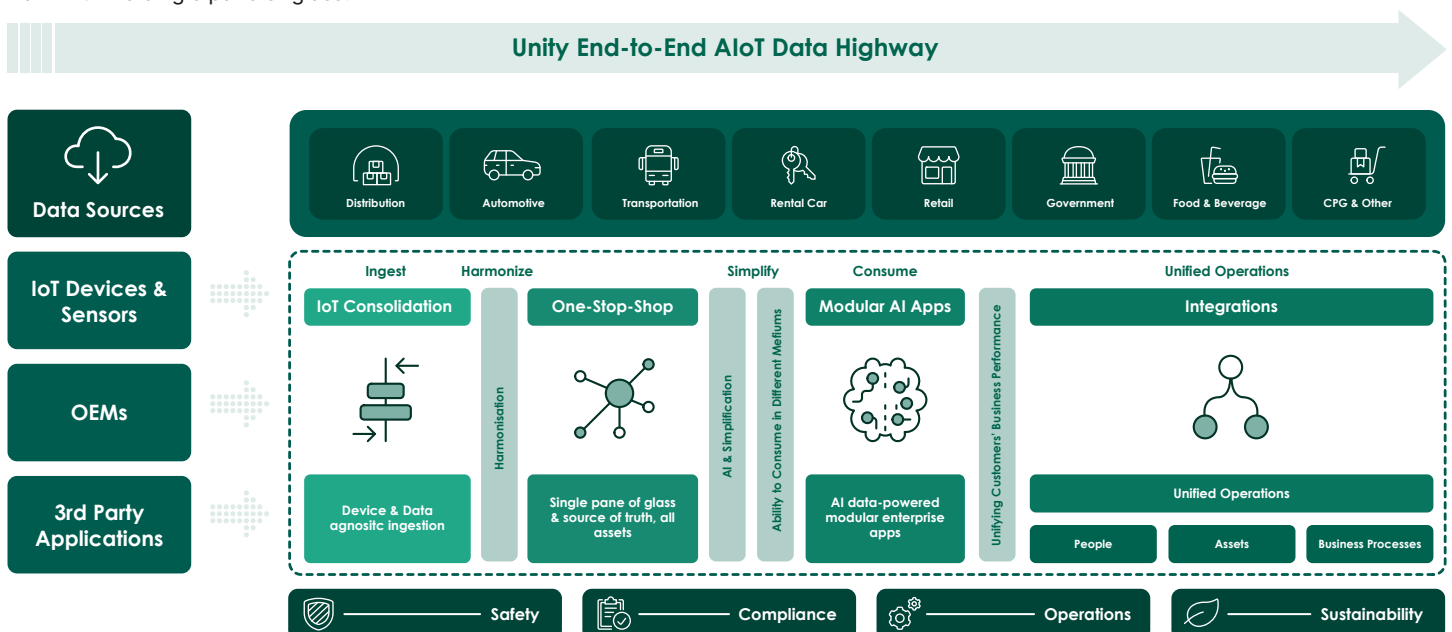


Sustainability

Reduce fuel consumption, optimise EV transitions, and lower environmental impact with advanced analytics.

Single Pane of Glass

Powerfleet Unity offers a single platform to manage all your connected assets and devices while maintaining full functionality, regardless of what type of asset you're monitoring. This includes driver and road-facing cameras, ELDs, cold chain sensors, vehicle and asset tracking, cargo monitoring, material handling equipment, and access to third-party device data. Experience seamless navigation and real-time access to critical information, giving you a comprehensive view of all your assets, locations, and operational insights from within a single pane of glass.



Key Capabilities



Ingestion & AIoT Capabilities

- Seamlessly ingests data **from 600+ sources**, including IoT devices, sensors, OEM systems, and third-party platforms.
- AI-driven **data harmonisation** delivers a **single source of truth** for operational intelligence.



End-to-End Visibility

- Provides real-time insights into **on-road and in-warehouse assets**.
- Ensures proactive decision-making through **predictive analytics** and AI-driven risk assessments.



Seamless Integration

- Integrates **effortlessly** with ERP, TMS, WMS, and other enterprise systems.
- Reduces **IT complexity** while enabling automation and business **transformation**.



Modular & Scalable Design

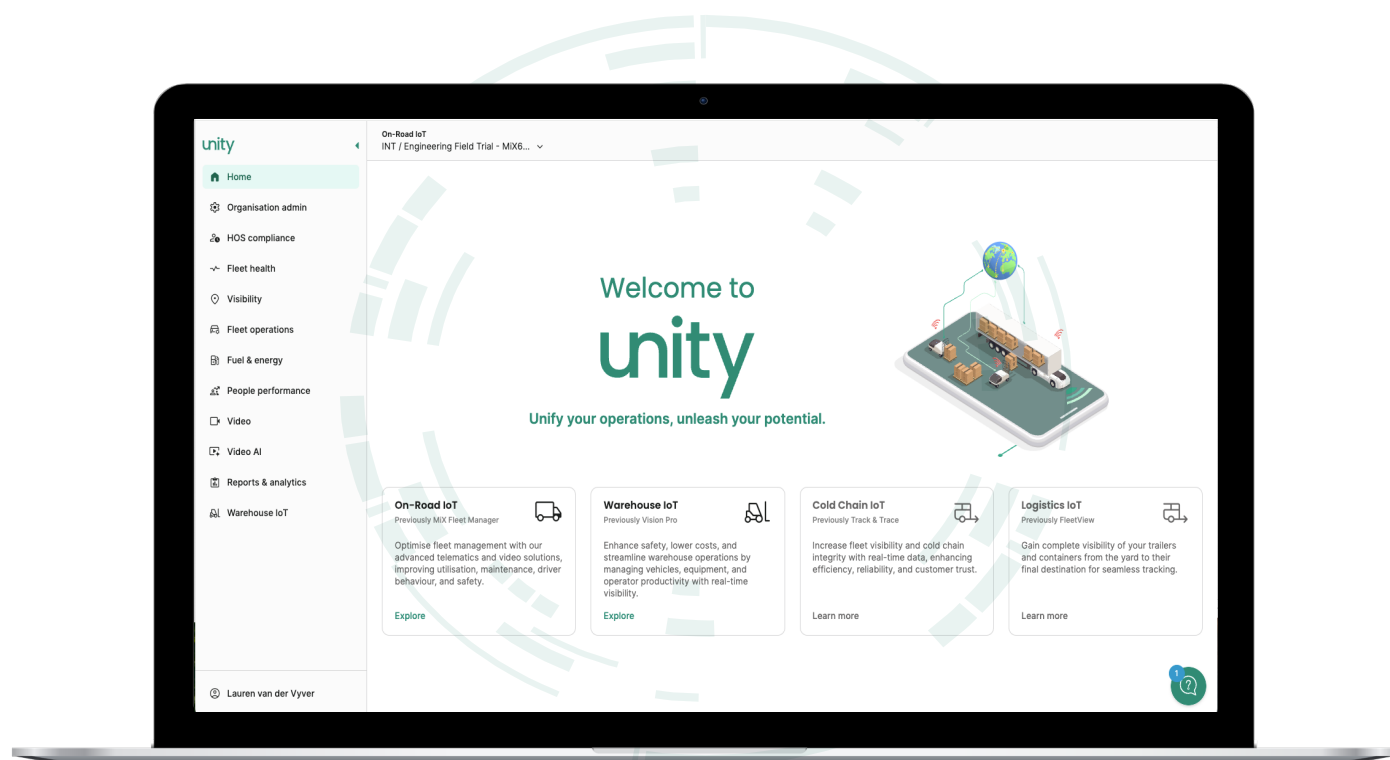
- Unity's **modular applications** allow businesses to **scale** at their **own pace**.
- **Flexible adoption** enables enterprises to invest in **high-value capabilities** for their operations.



Customer-Centric Innovation

- Designed with **real customer feedback** to ensure adaptability across industries.
- Continuous updates and **AI-driven insights** keep businesses ahead of industry trends.

Unity consolidates disparate data sources, eliminating multi-vendor complexity and enabling a single pane of glass for fleet and facility operations.



Why Powerfleet's Unity?



30+ Years of Industry Leadership:

A legacy of innovation and expertise in AIoT solutions.



Industry Proven:

Trusted by 48,000+ customers with 2.8 million subscribers worldwide.



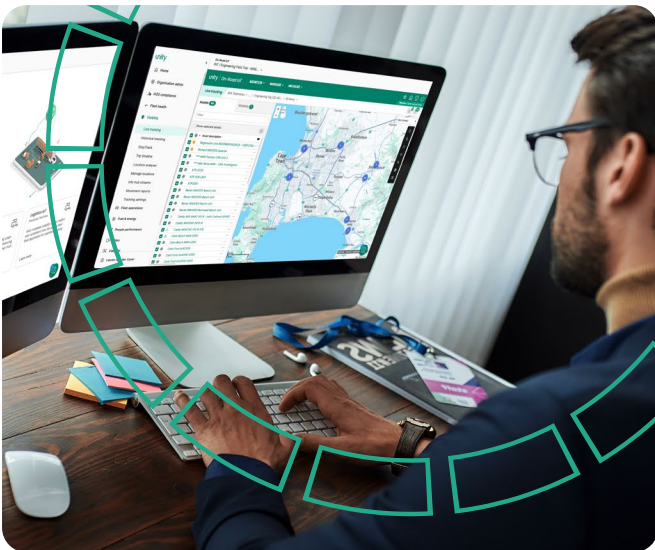
AI-Powered:

Embedded AI & data science for superior operational efficiency.



Integration-Ready:

300+ business system integrations and growing.



Powerfleet is the only provider delivering a truly end-to-end AIoT platform, integrating fleet, warehouse, and AI-driven safety solutions into a single system.

Powerfleet (Nasdaq: PWFL; JSE: PWR; TASE: PWFL) is a global leader in the artificial intelligence of things (AIoT) software-as-a-service (SaaS) mobile asset industry. With more than 30 years of experience, Powerfleet unifies business operations through the ingestion, harmonisation, and integration of data, irrespective of source, and delivers actionable insights to help companies save lives, time, and money. Powerfleet's ethos transcends our data ecosystem and commitment to innovation; our people-centric approach empowers our customers to realise impactful and sustained business improvement. The company is headquartered in New Jersey, United States, with offices around the globe. Explore more at www.powerfleet.com.