

Fleet Management Solutions

Industry-Leading Insights to Revolutionise Your Fleet Operations

Being responsible for the safety and security of your people and vehicles, as well as utilisation and longevity of your resources, is already a tough job. It will only become more difficult as industry demands, customer expectations, and advances in technology increase.

Fleet managers are challenged by not knowing where their vehicles are, the health of their vehicles, and if they have enough resources to complete the work for the day.

On top of that, they need to actively monitor driver behaviour to reduce vehicle misuse, improve fuel usage, increase driver retention, be compliant, and meet sustainability goals. The consequences are lower margins, lower customer satisfaction, higher liability – and even a negative association for your brand.

With the right technology and partner at your side, these challenges are not only overcome – they become an opportunity to differentiate your business.





Solution at a Glance

Powered by unrivalled data insights, Powerfleet enables businesses to digitalise operations through advanced automation from machine learning, simulation, and artificial intelligence (AI). This is made possible through Unity, our SaaS-based fleet intelligence platform. Unity ingests, processes, and enriches data from every asset, vehicle, and person. This is supported by a world-renowned services team with nearly 30 years of experience.



Safety and Security

- Enhance driver performance while identifying danger spots to reduce incidents on the road with live-stream data.
- Warn drivers of hazardous conditions, capture key metrics, and leverage driver scorecards for driver coaching.
- With real-time alerts and a wide range of monitored manoeuvres, always have the complete picture of your fleet's safety performance.
- Use our forensic data to understand what happened before, during, and after an accident – establishing cause and potentially mitigating liability.



Maintenance and Performance

- Reduce downtime, breakdowns, and costs from under or overservicing based on real-world usage and history.
- Live engine diagnostics and maintenance alerts based on predefined dates and/or the odometer increases vehicle longevity.
- Creating your own maintenance tasks assures work gets carried out when you need it. Furthermore, instant notifications about potential health issues helps you easily prioritise repairs.



Visibility and Resource Management

- A clear view of all assets, vehicles and people, empowering you to always know the location of your resources.
- Monitor when important events occur - geofence entry, dormant vehicles, and unauthorised driving – to avoid costly rentals, theft, and asset misuse to increase the performance and efficiency of your fleet.
- A flexible API platform to easily bring all vehicles and any IoT device type into a single pane of glass



Advanced Fuel Management

- Manage costs, avoid theft, improve driver behaviour to reduce waste, and meet sustainability goals.
- Real-time identification of fuel fraud is achieved through monitoring events and fuel cards integration by matching consumption trends, gas station locations with gas-filling, and sudden drops in fuel tanks.
- Easily uncover other hidden costs and losses, such as vehicle usage in off-business hours/days and driver behaviour that negatively impacts fuel economy.



Regulatory Management and Compliance

- Automate record keeping to reduce violations while increasing productivity and driver safety.
- Feel confident with your regulatory management while intelligently streamlining compliance workflows.
- Electronic logging device to automatically record driving time and Hours of Service (HOS) records (DVIR), vehicle engine data, movement, and miles driven.



Sustainability

- Transition to electric vehicles (EV) with battery and charging management as well as insights into accuracy of remaining driving range and location of charging stations.
- Achieve eco-friendly driving by detecting, reporting, consolidating, and scoring driving events that increase fuel consumption, emission of carbon gas, and accelerate wear and tear of vehicle parts.
- Gain insight into your CO2 consumption to properly manage against your carbon credits and inform ESG reporting.

Results

With Powerfleet you have access to real-time, multi-dimensional KPIs tailored to your business. You're empowered with the insight to optimise your fleet operations today, while being ready for what tomorrow holds.

Put your trust in Powerfleet to:



Reduce safety incidents



Raise driver retention



Boost employee morale



Increase longevity of assets



Improve customer satisfaction



Protect brand reputation



Shrink operating costs



Achieve sustainability goals



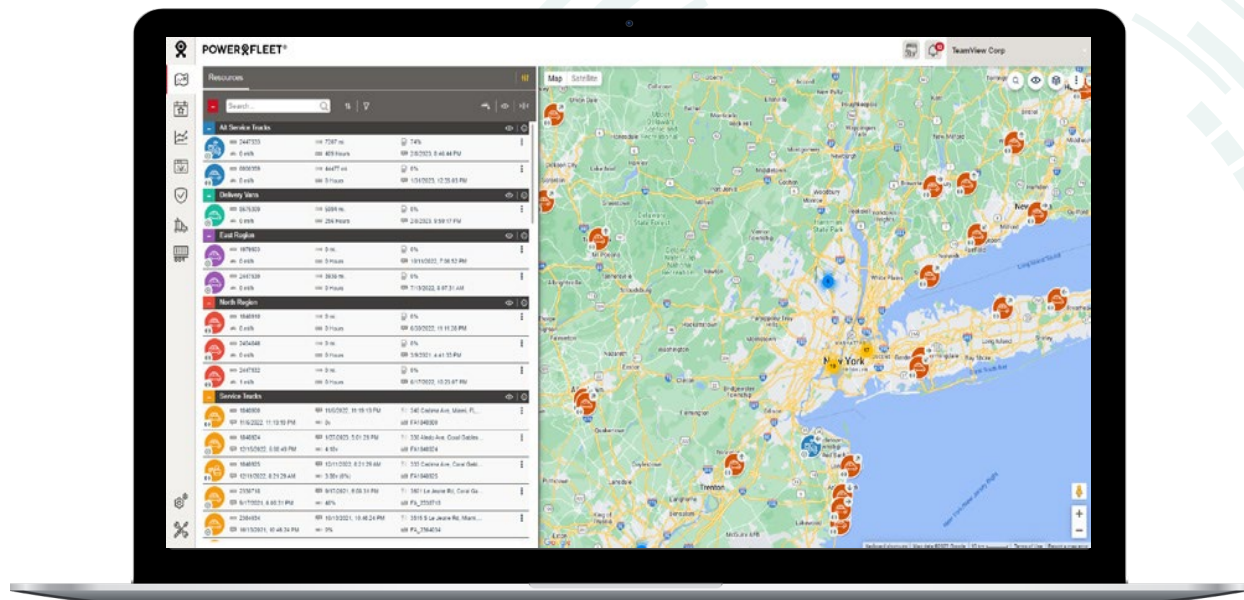
Mitigate liability



Adhere to compliance standards



Optimise asset, vehicle, and people



Powerfleet (Nasdaq: PWFL; JSE: PWR; TASE: PWFL) is a global leader in the artificial intelligence of things (AIoT) software-as-a-service (SaaS) mobile asset industry. With more than 30 years of experience, Powerfleet unifies business operations through the ingestion, harmonisation, and integration of data, irrespective of source, and delivers actionable insights to help companies save lives, time, and money. Powerfleet's ethos transcends our data ecosystem and commitment to innovation; our people-centric approach empowers our customers to realise impactful and sustained business improvement. The company is headquartered in New Jersey, United States, with offices around the globe. Explore more at www.powerfleet.com.