



Solutions for Construction and Heavy Equipment

● Transform Your Construction and Heavy Equipment Operations with Cutting-Edge Insights

Effectively managing a mix fleet of high value assets and vehicles, encompassing both yellow iron heavy equipment and over-the-road vehicles, presents a complex challenge within the construction industry.

For your heavy equipment, this task begins with establishing comprehensive visibility and real-time location information, to ensure the timely availability of your resources, while also safeguarding them against potential theft or damage.

Additionally, it involves optimising maintenance protocols based on real-world equipment utilisation data, providing a better picture of your equipment's lifecycles, and enabling better-informed business decisions.

For your over-the-road fleet operation, it involves knowing where your vehicles are, being responsible for the safety and security of your people and

vehicles, as well as optimising fleet maintenance and fuel usage to minimise costs while maximising equipment utilisation.

Additionally, these objectives should be pursued while upholding compliance standards and working towards sustainability targets.

Leveraging IoT and telematics data is key to overcoming these challenges. However, managing mixed fleets with diverse devices and systems from different OEMs and varied operations adds complexity, resulting in fragmented data, manual collection, limited analysis, and increased costs.

With the right technology and partner at your side, these challenges are not only overcome - they become an opportunity to differentiate your business.



● Solution at a Glance

Serving as your true one-stop solution for data aggregation and visualisation, Powerfleet's Unity platform seamlessly integrates IoT devices, OEM, and business system data and transforms this data into real-world, decision-grade insights. This versatile data serves a dual purpose, enhancing visibility through our Unity platform and offering the flexibility to export it into preferred formats via API, enabling you to make well-informed decisions with confidence.

Increase your ROI with a series of value-added capabilities.

This includes:



Safety and Security

- Swiftly respond to theft with accurate asset location and instant alerts with real-time security.
- Turning on high frequency reporting to further assist in tracking and recovery.
- After-hours movement tracking and emergency alerts allow instant action during unexpected situations.



Maintenance and Performance

- Reduce downtime, breakdowns, and costs from under or overservicing equipment based on realworld usage and history. minimise wear on assets.
- Maximise equipment longevity by tailoring maintenance to real-world usage patterns, based on engine hours and hydraulic system activation, to maintain optimal performance.
- Instant notifications about potential health issues helps you easily prioritise repairs.
- Promptly recognise maintenance requirements by pinpointing diagnostic trouble codes.



Regulatory Management and Compliance

- AEMP2.0 compatibility, ensuring seamless data exchange to power your compliance, maintenance planning and visibility needs.



Visibility and Resource Management

- Gain a comprehensive view of asset location and availability for efficient deployment based on real-time insights and usage patterns.
- Extend equipment lifespan and plan for replacements by understanding real-world usage patterns and maintenance needs via insights from engine hours data.
- Swiftly respond to theft with real-time location data, reducing losses and downtime.
- Allocate resources effectively by uncovering hidden costs, such as off-business usage, idling, dormancy etc.



Solution at a Glance

Powered by unrivalled data insights, Powerfleet digitises operations through advanced automation from machine learning, simulation, and artificial intelligence (AI).

Our fully agnostic fleet intelligence platform ingests, processes, and enriches data from every asset, vehicle, and person – all in a single pane of glass. Purpose-built to meet the goals of your fleets, our data-powered applications deliver real-world, decision-grade insights, enabling you to make more informed decisions at the speed of business.

These data-powered applications include:



Safety and Security

- Real-time in-cab driver coaching and incident detection (DMS) leading to a reduction in accidents on the road.
- Warn drivers of hazardous conditions, capture key metrics, and leverage driver scorecards for driver coaching.
- Enable exoneration with our forensic data to understand what happened before, during, and after an accident – establishing cause and potentially mitigating liability
- Enhanced theft recovery capabilities with accurate real-time location information, enabling you to act swiftly and recover stolen vehicles.



Maintenance and Performance

- Enhance vehicle uptime and minimise breakdowns with proactive maintenance, using real-world usage and historical data.
- Instant notifications on potential health issues for streamlined repair prioritisation for preventative maintenance, eliminating reliance on driver communication.
- Avoid unnecessary costs by preventing both over and under maintenance through data-driven insights.
- Promptly recognise maintenance requirements by pinpointing diagnostic trouble codes.



Sustainability

- Reduce waste by tracking fuel trends and kerbing inefficient driving behaviour.
- Identify and address driving habits that contribute to increased carbon emissions.
- Plan for electric vehicle adoption by evaluating efficiency and cost factors.



Regulatory Management and Compliance

- Electronic logging device to automatically record driving time and Hours of Service (HOS) records (DVIR), vehicle engine data, movement, and miles driven.
- Generate IFTA-compliant fuel usage reports for tax documentation.



Visibility and Resource Management

- A clear view of all assets, vehicles, and people, empowering you to always know the location of your resources.
- Stay informed about critical events like geofence entry or exit, dormant vehicles, and unauthorised driving. Proactive monitoring of theft and asset misuse, thereby boosting fleet performance and efficiency and protecting your bottom line.
- Swiftly respond to theft with real-time location data, reducing losses and downtime.
- Integrated assets ensure efficient resource assignment, reducing inefficiencies and costs.



Advanced Fuel Management

- Identify fuel fraud by monitoring events and fuel card integration.
- Reduce waste and enhance sustainability by matching consumption trends with gas-filling and gas station locations, preventing idling, improving driver behaviour and more.

Heavy Equipment | Theft Recovery Screen

POWERFLEET®

SAFETY & SECURITY > INCIDENT DASHBOARD

0 Collision

COLLISIONS & THEFTS (43 UNREAD) +

Possible Theft Not Reviewed
Resource DELETE. Occurred On 9/18/2023 at 20:34:31

Last Update 2023-09-19 07:01:22AM

Last Known Location 11625 Alta Dr, Jacksonville, FL, 32226

Last Known State Moving at 0 mph / Dormant

Theft Type Possible Theft Detection Triggered (Emergency Tracking)

Theft Detected 2023-09-18 08:34:31PM

Theft Address

Theft Coordinates (Lat, long) 30.438353 -81.57859

Incident ID 12026559

DELETE
Manufacturer Lay-mor Model Street Swe... Color N/A

Start Emergency Track **Close**

Over-the-Road | Violation Screen

POWERFLEET®

SAFETY & SECURITY > INCIDENT DASHBOARD

18 Collision

COLLISIONS & THEFTS (0 UNREAD) +

Violation Not Reviewed
Resource DT108. Occurred On 9/14/2023 at 05:20:51

Incident Type Cellular phone usage

Severity Low

Description Camera: Cellular phone usage

Address

Coordinates (Lat, long) 28.128794 -82.416405

Incident ID 11565242

Inside LandMark

DT108
Manufacturer Model Color N/A

N/A

Re-occurrence 0 **Safety score** 0

Close

Results

With Powerfleet you have access to real-time, multi-dimensional KPIs tailored to your business. You're empowered with the insight to optimise operations today, while advocating for the future of your fleet.



Reduce theft



Optimise asset, equipment and people utilisation



Shrink operating costs



Achieve sustainability goals



Increase longevity of assets



Adhere to compliance standards



Enhance utilisation



Protect brand reputation



Reduce safety incidents



Boost employee morale



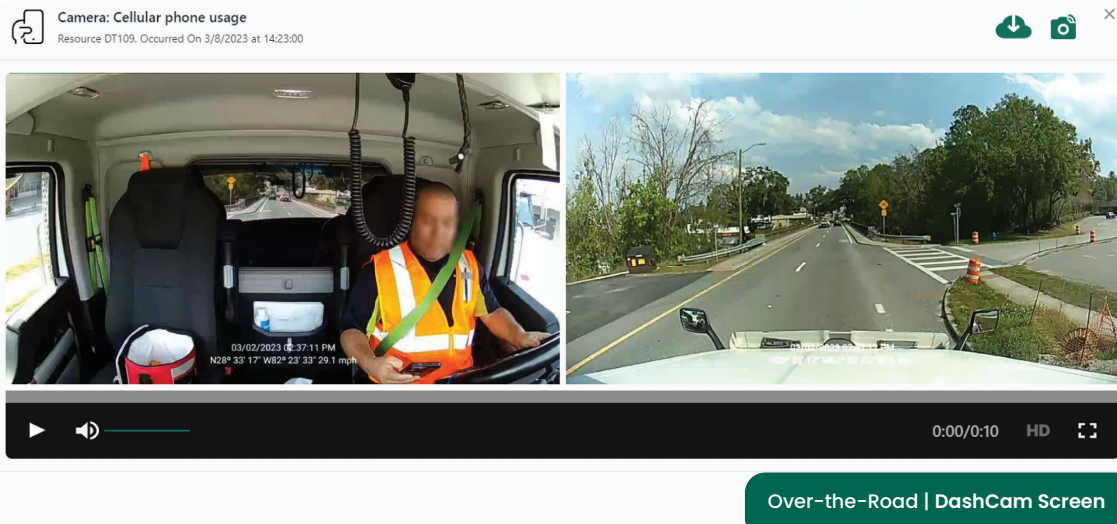
Mitigate liability



Improve customer satisfaction



Reduce fuel costs



Over-the-Road | DashCam Screen

Powerfleet (Nasdaq: PWFL; JSE: PWR; TASE: PWFL) is a global leader in the artificial intelligence of things (AIoT) software-as-a-service (SaaS) mobile asset industry. With more than 30 years of experience, Powerfleet unifies business operations through the ingestion, harmonisation, and integration of data, irrespective of source, and delivers actionable insights to help companies save lives, time, and money. Powerfleet's ethos transcends our data ecosystem and commitment to innovation; our people-centric approach empowers our customers to realise impactful and sustained business improvement. The company is headquartered in New Jersey, United States, with offices around the globe. Explore more at www.powerfleet.com.